

3. - " //architizer.com [Electronic resource]. – : <https://architizer.com/projects/sports-and-culture-house-prismen/> : 10.09.2021.
4. , : //architizer.com [Electronic resource]. – : <https://www.e-architect.com/wp-content/uploads/2013/04/schaarbeek-sports-hall-belgium-design>. – : 16.09.2021.

72 «1920/1940» (476)

1920–1940- ARCHITECTURE OF SOVIET BELARUS IN PERIODIC PRINTING 1920–1940-ies.

:
1920–1940- . –

Abstract: Periodical materials are not used in research on the history of the architecture of the BSSR. But publications in periodicals from the 1920s to the 1940s. – these are important and sometimes the only sources of information about the development of architecture of that time.

Key words: architecture, history, information, article, newspaper.

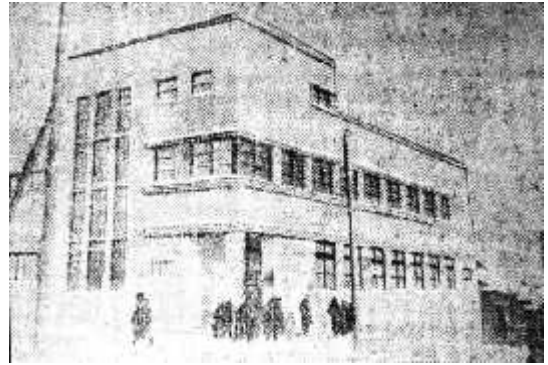
1920–1940- . , 1920–1940- . , . « » . [1, . 6]. 1927 . , 1929 . « (-)» [2, . 7]. [3, . 4].

8. 1 : «60 %»
 («»), («»), 2
 [4, .3].

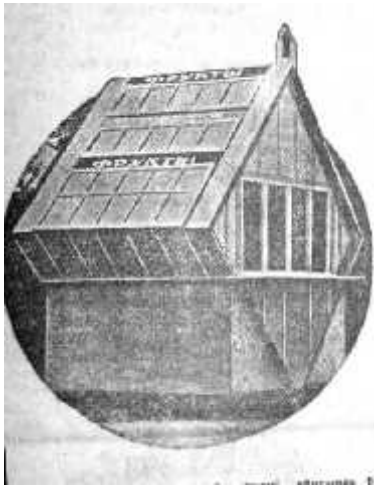
(.2), - (.1935.18 .4),
 10 (.4) (.1934.18 .4).
 (.3), - (.1935.



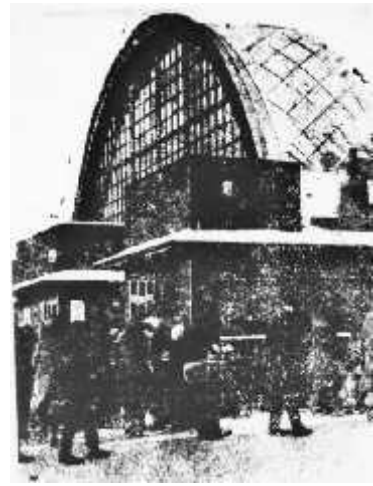
.1.



.2.



.3.



.4.

: «

» (1938 .).

«

» (

[10, .3].

1. / . // . - 1927. - 3 .
2. « » // , - 1929. - 11 .
3. / // . - 1938. - 4 .
4. / . // . - 1935. - 22 .
5. « » // . - 1935. - 3 .
6. // . - 1935. - 21 .
7. / . // . - 1936. - 12 .
8. // . - 1935. - 26 .
9. // . - 1948. - 21 .
10. // . - 1950. - 16 .

72.035 (476.4)

ARCHITECTURAL SOLUTION OF WOODEN CONSTRUCTIONS: THE MAINTENANCE FACTOR INFLUENCE

Abstract: The factors influencing the maintenance of wooden structures, reasons for their occurrence, the relationship with strength and countermeasures are analyzed in the article. Their influence on the architectural appearance of modern and historical structures through a change in the color and texture of the surface is considered.

Key words: dwelling house, architecture, architectural features, maintenance, material texture, wooden structures.