

72.011

..

-

-

-

-

,

-

,

,

«

»

-

-

(

-

)

,

-

.

,

-

,

-

.

.

,

,

-

(1).

-

-

-

,

,

,

-

,

(2).

,

,

-

,

,

-

-

(

-

.

,

,

.).

-

,

,

(

)

-

: «

-

.

-

-

-

«

,

,

-

».

»

(1).

-

-

-

,

-

,

,

-

-

,

-

.

-

,

.

-

,

-

,

:

-

-

,

,

.



[3].

[3].

1. . . . , 1968. - 264 . . .
  2. . . . ; . . . ; . . . ; . . . ;
  3. . . . , 1983. - 384 . . . / . . .
  4. : . . . , 2000. . 464.
- . . . , 1978. . 167.

*Chirikov . . .*

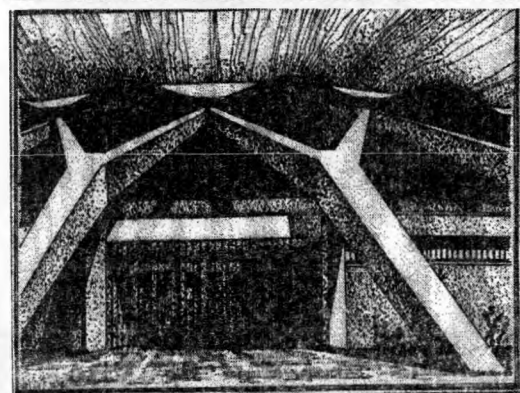
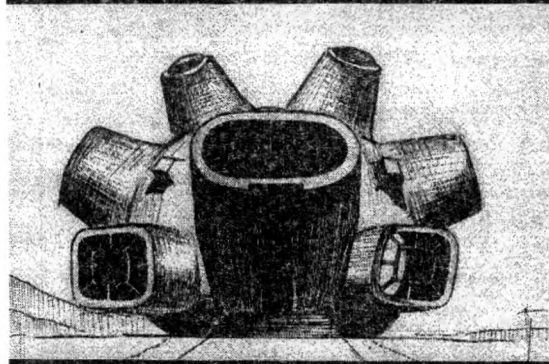
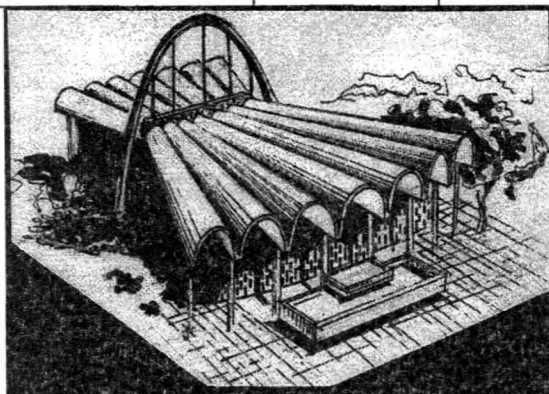
**TECTONIC IN ESTHETIC-EMOTIONAL  
PERCEPTION OF ARCHITECTURE**

*This article is devoted to the problem of person perception. It's research interaction of architectural and design elements of material construction and the problems are appeared at their artistic and esthetics understanding.*

			( .1)
			( .2)

			( .3)
			1 51 ( .4)

			( .5)
			( .6)

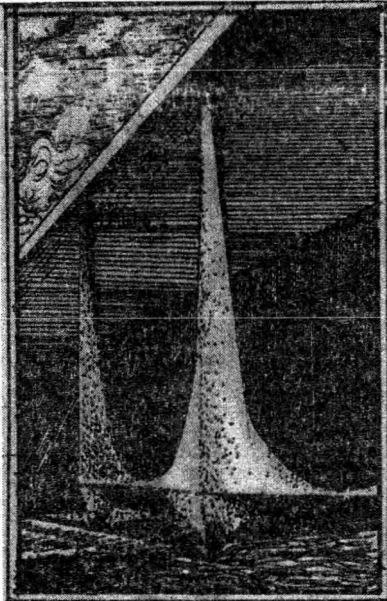


.I.

.2.

.3.

V-



. 4. .

«

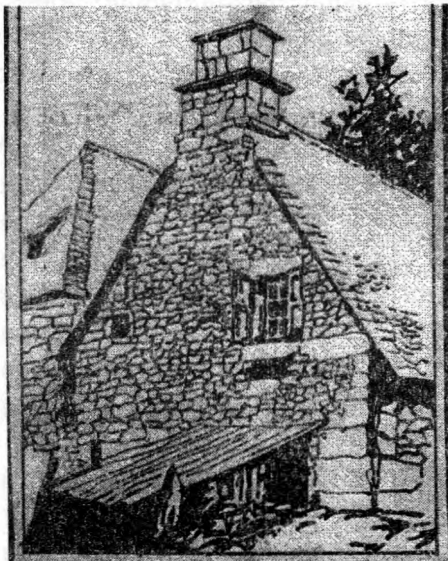
»

«

»

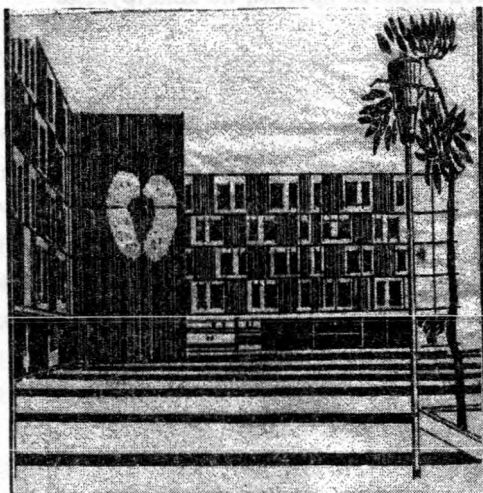
«

»



. 5.

,



. 6.

,