

).

[0°; 360°]. [2], (3),

$$= f(e, R, r, d, h), \quad (9)$$

$R, r -$

0,03 ; $d, h -$

0,03 0,15

0,01...1,0 Y 0,1 ;

0° 180°.

(8), (9)

« ».

1. , 1989. – 176 .
2. , 1986. – 340 .

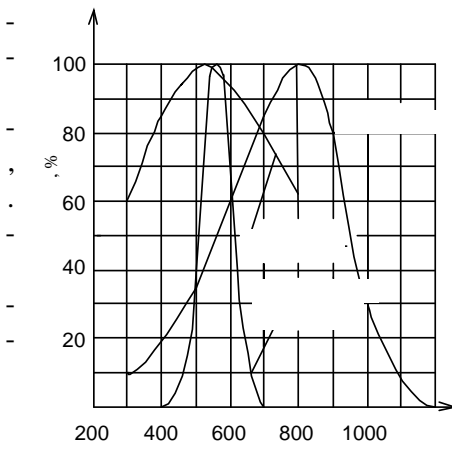
24.12.2004

621

« – »

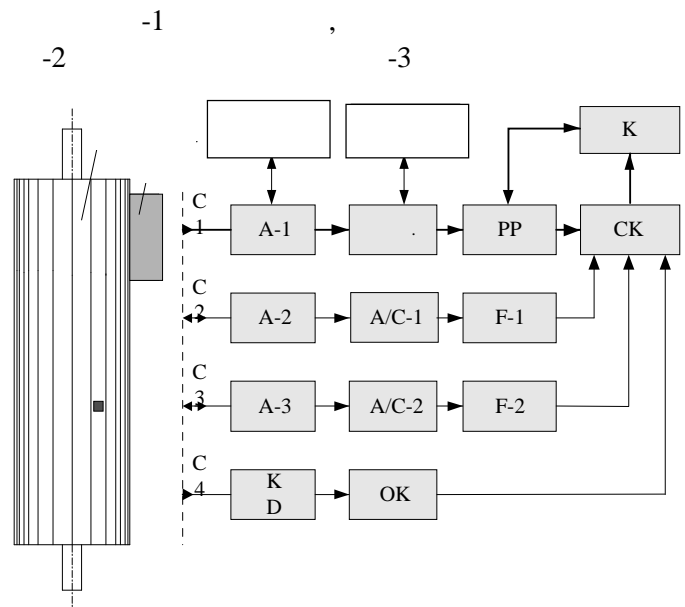
[1, 2].

()



(. 1).

. 2



. 2.

-1

-1,

,
 ,
 ,
 ,
 « »
 -2, -3, - / -1, / -2
 F-1, F-2,

[3, 4].

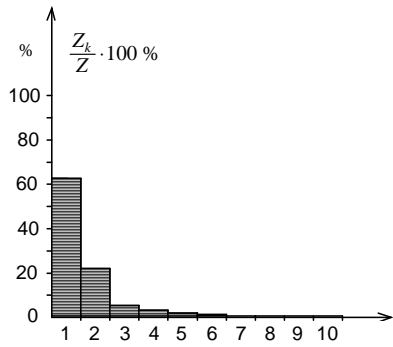
-4,

KD

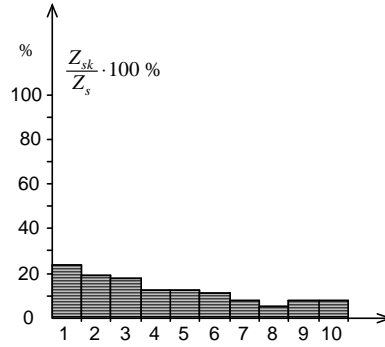
[1].

10

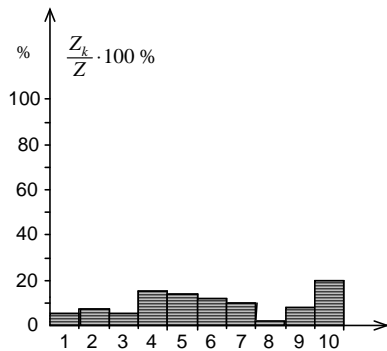
100



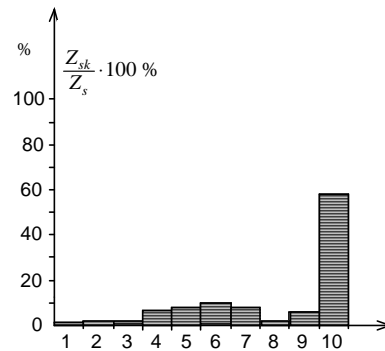
. 3.



: -



. 4.



: -

- . 4.

. 3,

1. Tests of dc machine commutation performed with a spark analyzer in comparison to the results of computer simulation of current waveforms in commutation // XXVII , 1991. - . 50-58.

2. Determination of electromagnetic interference forming at the brush-commutator contact in direct current machines by means of a method based on luminous spark emission // Electromagnetic Devices and Processes in Environment Protection the Second International Conference. - , 1997. - . 257-261.

3. « - » // : VII PTZE. - , 1997.

4. Determination of electromagnetic interference forming at the brush-commutator contact in direct current machines by means of a method based on luminous spark emission // Proceedings of seminar on electrical engineering «BESKIDY 97», Conference Archives. - 1997. - Vol. 4. - . 93-96.

9.07.2004